

Diagram illustrating the components of the Door sensor main body:

- LED Light
- Door sensor main body
- Disassemble button
- The code button
- Sticker
- Battery
- Screw stopper
- Screw

Detect open/close status of the door/window

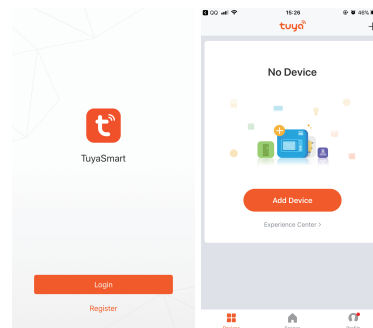
Battery: CR2 x 1  
Battery Life: 2 years  
Standby current: 13uA  
Standby time: 5 years  
Use time: 1 years (15 times/day) ; 2years(7 times/day)  
Wireless Type:2.4GHz  
Protocol:IEEE 802.11b/g/n  
Wireless Range: 45m  
Operating Temperature:0℃ ~ 40℃ (32°F ~ 104°F)  
Operating Humidity: 20% ~ 85%  
Storage Temperature:0℃ ~ 60℃ (32°F ~ 140°F)  
Storage Humidity:0% ~ 90%  
Size:Main body: 71mm x 21mm x22 mm  
Small body: 40mm x 11mm x 11 mm



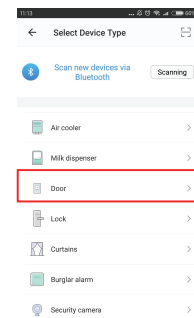
- 1.Android phone: download "TuyaSmart" from GooglePlay.
- 2.Iphone :download "TuyaSmart" from App Store.



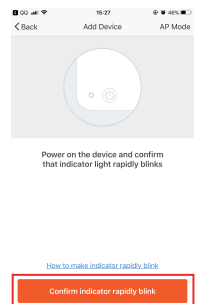
- 1.Run "TuyaSmart"from your smartphone desktop.
- 2.Register and login



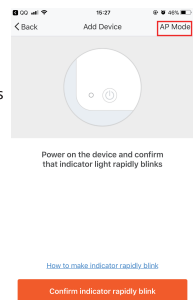
Select Device Type,select“Door” in the list to add the device.



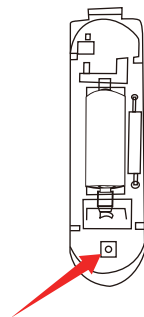
1. Press and hold the reset button for 6s, the indicator will blink rapidly. The device is in smart Wi-Fi mode .
2. Click "Confirm indicator rapidly blink"
3. Configuring network based on prompt of the APP.



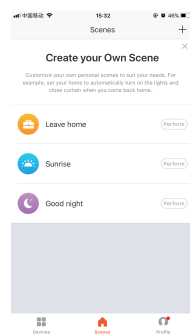
1. Press the reset button for 6s again, the LED will blink slowly. The device is in AP mode.
2. Click the "AP Mode"
3. Configuring network based on prompt of the APP.



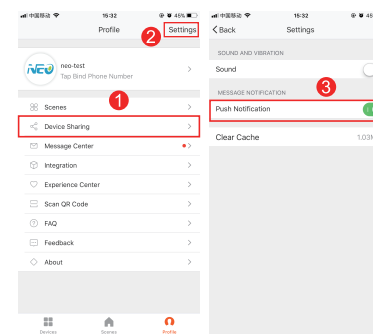
1. Press and hold the reset button for 6s, the indicator will blink rapidly. The device is in smart WiFi mode.
2. Press the reset button again, the indicator will blink slowly. The device is in AP mode.



associate two devices to work to create your own scene



**Share:** Share your devices to others directly . (step 1)



**Push Notification:** Settings—Push Notification. (step2,3)

Device Status	LED State
Smart Wi-Fi	LED will rapidly blink
AP mode	LED will slowly blink
Turn on	Blink once slowly
Turn off	Blink once slowly
Reset	The LED light often lights 4S, then closes, and starts to enter the smart Wi-Fi mode or AP mode after 3S.



## Make Your Home Smarter