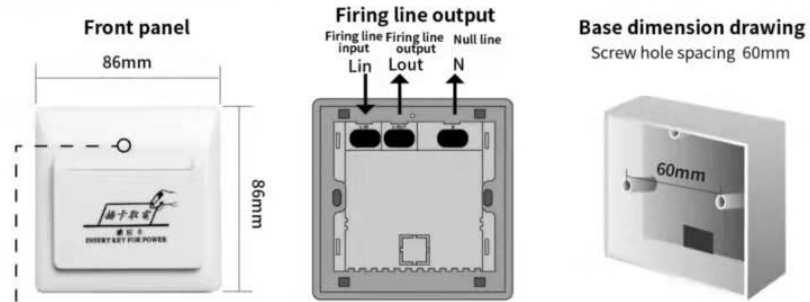


ES2 Card switch user manual (TTHotel System)

1.Dimensions and wiring diagram



Indicator status Power off : red light, Power on : no light

2.Introduction

- (1) Usable range: Hotel, Apartment, Homestay (TTHotel system available);
- (2) Control or limit power usage;
- (3) Any IC cards - Non-hotel system M1 card, bank card, Hotel cards and Room cards.

3.Parameter

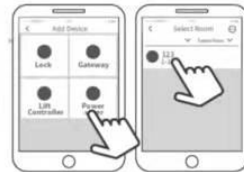
Working voltage	AC180-250V	Card frequency	13.56MHz
Wireless operating frequency	2.4GHz	Outage delay time	15s (customizable)
Load rating current	30A	Installation dimension	Screw hole spacing 60mm
Load rating	6600W	Material	flame retardant PC plastics
Card type	Mifire one(M1)	Operating mode	Any IC cards, Hotel cards, Room cards, etc.

4.Operation user manual

1. Open the device page on TTHotel APP and click on the upper right corner to add the device;



2. Select power switch -> Select room;



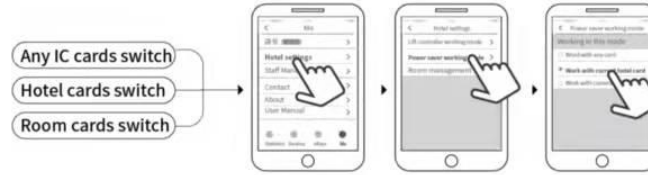
3. Insert the room card into the access switch and activate it;



4. Nearby power switch signal shown on the mobile phone-> click the blue '+' icon to add.



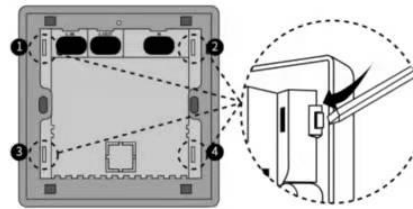
Switching mode: My->Hotel management->working mode



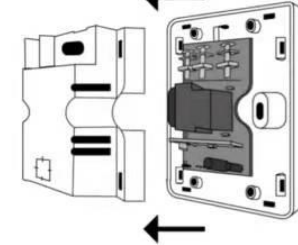
Any IC cards switch : all Non-hotel system M1 card, bank card, etc.

5.Restore factory setting

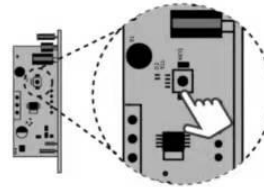
1. Use the tool to raise the four buckles;



2. Remove the shell;



3. Long press the reset button for 3 seconds.



6.Limited Warranty

1. For any defect in material and workmanship, the original purchaser of the product can:

- 1) Return or ask for a replacement within 7 invoice days.
- 2) Ask for a replacement within 15 invoice days.
- 3) Ask for free repair in 365 invoice days.

2. This warranty does not cover defects caused by modification, alteration, misuse or physical abuse of the product.

Disclaimer

We continuously optimize products as new technologies and features are developed. For this reason, we reserve the right to make alterations to the products without prior notice.