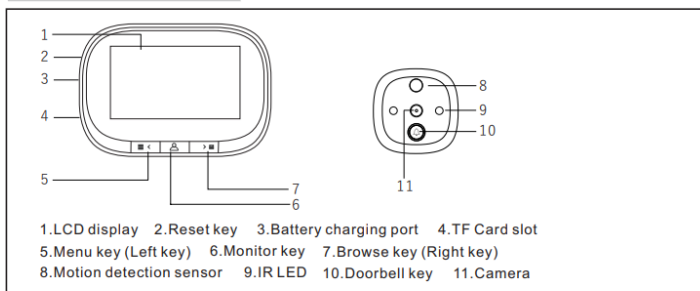


Digital Door Viewer User's Manual

Thanks for purchasing the digital door viewer produced by us, in order to help you to use the product in right way, please read this manual carefully before using it.

The product picture

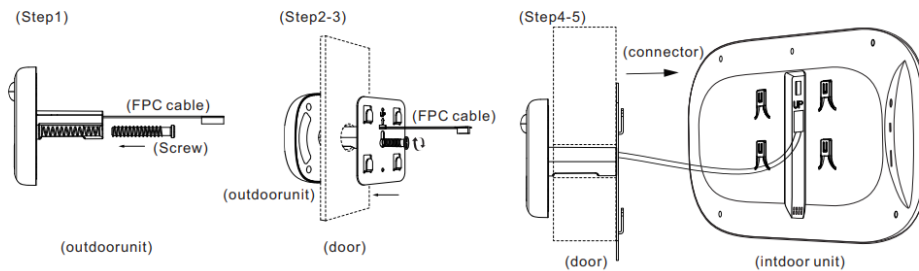


Install Instruction

- Step 1.According to the thickness of the door to select a suitable bolt, then, screw the bolt into the hole (refer installation icon 1)
Step 2.Tear off double-side adhesive protective film on the back of the outdoor part, insert the unit barrel together with the FPC cable through the peephole of the door, then stick the outdoor part on door(motion detection is upward, doorbell key is downward)

01

- Step3.Take out the metal bracket (the "UP" arrow on the bracket means upward), pass the FPC cable through the rectangular hole, the right screw through the round of the metal bracket, then, lock the metal bracket with the outdoor unit tightly.
Step4. Connect the FPC cable from outdoor part to the connector of the indoor part (pay attention to the right direction)
Step5. The four slots on the back of indoor part is aligned with four projection on metal bracket and buckle up, then pull down the outdoor part to lock tightly.
Step6. Insert TF card to the indoor unit. Installation finished.



Menu Setup

In the standby status after power on, press menu key for 3 seconds to enter the menu setup interface, then, press left or right key to select the item, press monitor key to confirm, press menu key for 3 seconds again to exit.

Menu page include 11 menu setups:

- 1.Language: Chinese / English

02

- 2.Record Mode: Photo / Video. When select video, it will consume more power.
- 3.Motion Detection: On/Off. It will consume more power when motion detection is on.
- 4.Screen Off Time: 15S/25S/35S/Off. When you select "Off", it can't be turn off automatically.
- 5.Ring On/Off: On/Off. The bell will not ring when you select "Off".
- 6.Ringing Type: 12 ringtone for selecting.
- 7.Ringing Volume: "High", "Medium", "Low" 3 levels for selecting.
- 8.Date Time: year/month/day/hour/minute/second can be set.
- 9.Format Disk: all record files can be deleted when you format the memory card.
- 10.Default Setting: Recover to factory setting.
- 11.Software Version: information for repairing reference.

Operations

- 1.Power on:Press the doorbell key or monitor key.
- 2.Power Off: long press the monitor key for 3 seconds, or press the reset key, or it will turn off automatically 15S/25S/35S after it is turn on
- 3.Doorbell: When pressing the bell key, the indoor unit will display and ring, at the same time, it will make photo or video.
- 4.Record mode: Photo and video record mode can be selected in setting menu.
Photo mode, when pressing bell key or monitor key it will take photos.
Video mode, when pressing bell key or monitor key it will make video.
- 5.Take photo/video: press doorbell key, or press monitor key in monitor status.
- 6.Motion detection:Turn on this function, when something moving within (1-3M) distance from the product, it will turn on and make photo or video automatically.
- 7.Enter/exit setting manual: long press menu key (left key) for 3 seconds.
- 8.Enter record reviewing: long press browse key (right key) for 3 seconds.

03

Product Specifications

Display screen	4.3 inch TFT
Image sensor	1MP
Viewing angle	Horizontal 120 ° (diagonal 170 °)
Record mode	Photo / Video
Doorbell ring	12 optional chords
Micro SD card	Support 1 to 32G
IR Led	2PCS
Motion detection	1-3M
Power supply	Rechargeable Battery
Door thickness	35-120mm
Menu language	English, Chinese
Product size	Indoor unit 146x97x20mm Outdoor unit 61.5x61.5x13.5mm

04

Standard Package

Outdoor device 1pc Indoor device 1pc Metal bracket 1pc Screw 3pc USB cable 1pc User manual 1pc

Quality warranty: 1 year

Picture is just for reference, goods in kind prevail, manufacture reserve the right to improve the appearance and functionality and upgrades without notice.