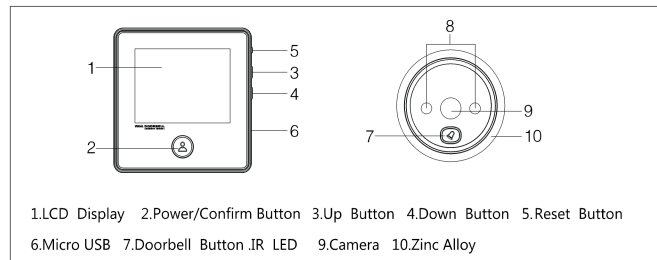


Digital Door Viewer User's Manual

Thanks for purchasing the door viewer product from us
In order to help you use the product in the right way ,please read this manual carefully before using it .

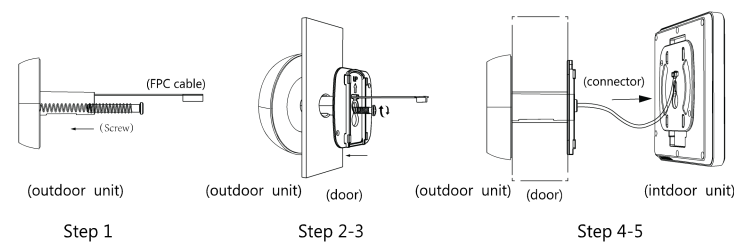
The product picture



Install Instruction

- Step 1: According to the door thickness to choose a suitable screw, then turn the screw into the screw hole on the barrel of outdoor unit.
Step 2: Insert the barrel together with the FPC through the door peephole, then hold the outdoor part on door in right direction. — 1 —

- Step 3: Take out the metal bracket (the "UP" arrow on the bracket means upward), the FPC pass through the rectangular hole, the screw pass through the round hole of the metal bracket, then to lock the metal bracket with outdoor part tightly.
Step 4: Connect the FPC from outdoor unit to the connector of the indoor unit in right direction.
Step 5: The four slots on the back of indoor unit is aligned with four hooks on the metal bracket and buckle up, then pull down indoor unit to lock tightly.
Installation Finished



Function Operations

- 1.Power on/off : when pressing "doorbell button" or "power button", the indoor part will power on and ring ,keep on pressing "power button" for 3 seconds , the device will power off . — 2 —

- 2.Take photo: pressing "doorbell button", the device will power on and take photo; in power on mode , pressing "power button" it will take photo too.
3.Review photo: In power on mode,press "up button" or "down button" to review photos.
4.Delete all photos: in power on mode or when reviewing photos, press "up button" for three seconds to delete all photos in memory
5.Delete single photo:when reviewing photos, press "down button" for three seconds to delete one photo in memory
6.Select power off time: press "down button" for three seconds to select the power off time :15s/25s/off;

Technical Specifications

LCD screen	2.8 inch	Adapter	5v@2A
Resolution	320*240	Vision angle	90°
Memory	Built-in cyclic storage in device	Door hole Diameter	14-22mm
Battery	800mAh (or above)	Door thickness	32-120mm
Camera	0.3MP	Temperature	-20°C~55°C
IR LEDS	2 PCS,850 nm	Product Size	Indoor part: 90*88.5*13mm Outdoor part: φ 55*13mm

— 3 —

Products Accessories

Indoor part *1	outdoor part *1	mental Bracket *1
User manual *1	Product warranty card *1	Screws *3

Safety Precaution

- Non professional ,please do not dismantle the device
 - Do not use this product in high temperature/humidity/salt
 - Please make sure never to pull the camera cable in case to break it
 - Please use standard model adapter , prevent the charger to damage the battery or device
- Quality warranty :one year
Picture is just for reference ,good in kind prevail ,manufacture reserve the right to improve the appearance and functionality and upgrades without notice .