

## CamHiPro Mobile App Instructions



Android



IOS

## Software Overview

CamHiPro APP is a tool for managing network cameras, which can realize the functions of monitoring the images of network cameras on the LAN and the Internet on the mobile phone. The APP supports LAN search to add ID numbers and manually enter camera ID numbers, supports sound waves, AP configures WIFI, supports adding low-power consumption devices and sharing devices, device add, delete, and edit functions, supports audio monitoring and intercom, supports snapping pictures to the mobile phone, support image quality level settings, support remote download video files and cloud storage and other functions.

### 1. Add camera

Connect the mobile phone to the WIFI network, enter the APP and click the Add Device button to enter the Add Device interface. Choose different adding methods according to different types of cameras, because common IP cameras cover various adding methods. The following adding instructions are based on IP cameras.

If the camera is the first time to use or recovered to factory settings, and not connected to the network, click the new device; for a camera that is connected to the network, click the device in use. After clicking the "New Device" button, power on the device, wait about 30 seconds, confirm that the device is in working state, and click Next.

1

### 2. Battery wireless camera add and battery 4G camera add

The battery wireless camera and the battery 4G camera are low power consumption cameras. When use, please select the corresponding add operation according to the type of camera. For specific add methods, refer to the IP camera add method.

### 3. Add sharing device

Click Add Sharing Device, you can add the camera by scanning the QR code generated by the shared device directly.

### 4. Delete camera

On the device list interface, long press the camera to be deleted or click the setting button to enter the camera setting interface, click the **delete device** button to delete the added camera.

### 5. View camera screen

After adding the camera for a few seconds, wait for the camera to connect to the camera automatically, if prompt online means can view the camera video. Click the online camera to enter the camera live interface.

#### Camera status description:

**【Connecting】** The camera is establishing a connection with the network camera at this time. Depending on the network, the connection time varies.

**【Online】** This status indicates that the device is connected normally, click to watch the video;

**【Not connected】** This status indicates that the device is offline

**【Sleeping】** This status indicate that the camera is in sleep state **(low-power consumption cameras will have this status)**

**【Offline】** This state indicates that the camera is offline

**【Password error】** This status indicates that the camera login password is wrong. Clicking on the camera in this status will pop up the Modify Password dialog box.

4

### 1.1 Connected to network cable

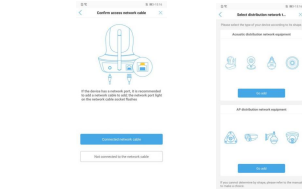
If the device is connected to a network cable, click the "connected to network cable" button, and the app will search for the UID of the device in the current LAN automatically. Select the UID to be added and click the add button, the device will automatically search nearby WIFI signals to enter the wireless configuration interface. Then enter WIFI password, click "Configure wireless and add", after WIFI configuration is successful, jump to the device list interface; if you don't want to configure WIFI at present, click the "don't configure yet, add directly" button directly, add camera after confirmation.

### 1.2 Not connected to network cable

If the device is not connected to a network cable, click the "Not Connected to Network Cable" button to enter the interface for selecting a network type

**Sonic distribution network support equipment:** Robot camera, card camera, light bulb camera, small flying saucer, etc.

**AP distribution network support equipment:** box camera, Pan Tilt camera, PTZ Dome Camera, flying saucer, etc.



#### 【Sonic distribution network】

Power on the device, it will enter the waiting state for connection, and emit a "ding dong ding dong" sound intermittently, click Next, use the mobile phone to scan the QR code of the device UID number; if there is no QR code, click to skip, enter the password of the WIFI signal to be configured, and click to start the sonic configuration, the system will configure WIFI automatically. After the WIFI configuration successfully, there will be a sound prompt.

#### 【AP distribution network】

**Android Mobile:** In the status of not connected to the network cable, power on the

2

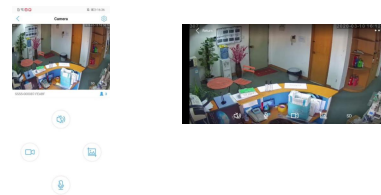
## 6.Live interface function description

### 6.1 Common camera interface

The normal camera monitoring interface is displayed in small screen mode by default, and the function selection button is located at the bottom of the screen. Calling up more function keys, you can slide to the left in the blank space. The key function description is shown in the figure below

|  |                  |  |                      |
|--|------------------|--|----------------------|
|  | monitor          |  | intercom             |
|  | snapshot         |  | local record         |
|  | Mirror / Flip    |  | focus                |
|  | Preset position  |  | Volume adjustment    |
|  | image adjustment |  | Night vision mode    |
|  | Full screen      |  | Resolution switching |
|  | back             |  | toolbar              |

**Note: Some functions need the device support.**



#### PTZ function:

For devices with PTZ function, use your finger to move the live video, the camera will rotate according to finger swipe direction and slide length.

#### Exit live interface:

On the small screen interface, hold down the blank space or click the back button to exit the

5

device, click to Add, the APP will search for hot spot signals from nearby cameras automatically. The format of the hot spot is IPCAM-XXXXXX, the default password is 01234567. Select the hot spot of the camera you want to add, click connection. After the connection successfully, enter the device add interface, click add to enter the wireless configuration interface, enter the WIFI password of the router, and click "Configure wireless and add". After the WIFI configuration successfully, jump to the device list interface; if you do not want to configure WIFI at present, click the "don't configure, add directly" button directly, add the camera after confirmation.

**Note: The AP distribution network needs to enable the GPS function of the mobile phone first.**

**IOS Mobile:** In the status of not connected to the network cable, power on the device, click to go to the settings, the APP will jump to the WIFI setting interface of the mobile phone, find the WIFI signal in the IPCAM-XXXXXX format, the default password is 01234567, click connection, the APP will pop up a prompt after successful connection, click this prompt to return to the APP device addition interface, click Add to enter the wireless configuration interface, enter the WIFI password of the router, and click "Configure wireless and add". After the WIFI configuration successfully, jump to the device list interface; if you do not want to configure WIFI at present, click the "don't configure, add directly" button directly, add the camera after confirmation.

### 1.3 Add a device in use

#### 【Scan QR code】

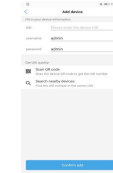
Use the online QR code generation tool to generate the QR code of the UID, then scan and add the QR code through the mobile APP.

#### 【Search nearby devices】

Click the Search nearby device button, search the IP camera in the wireless network where the phone is located, and select the corresponding UID.

Enter the camera password (the default password of the camera is admin).

Click the add button to complete adding a camera.



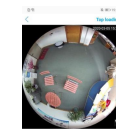
3

live broadcast interface.

### 6.2 Panoramic camera interface

Depending on the model, the panorama camera will have a different live interface. Subject to the connected model. The key functions are shown in the figure below.

| Top loading | Installation mode |  | View selection    |
|-------------|-------------------|--|-------------------|
|             | monitor           |  | intercom          |
|             | snap shot         |  | Local record      |
|             | cruse             |  | night vision mode |
|             | back              |  | full screen       |



#### Exit live interface:

Press the back key to exit the live interface

## 7. Camera parameters

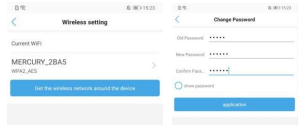
When the camera is online, click the icon on the camera list interface or live interface to enter the camera parameter setting interface. Because different cameras has different functions, the specific functions are subject to the functions of the connected camera that displayed on the APP.

### 7.1 Basic settings

6

### 7.1.1 Wireless settings

Click to get the wireless network around the device, the device will search the WIFI network of the current environment automatically, select and input password to configure the WIFI of the current device.



### 7.1.2 Change password

You can modify the access password of the camera. After ticking show password, the password will be visible.

## 7.2 Alarm settings

### 7.2.1 Alarm management and notification

#### 【Alarm push】

Select On Indicates that a push message will be sent to the phone when the alarm is triggered.

#### 【Device alarm】

##### Motion detection alarm

Select On indicates that the device enabled motion detection function. Click adjust the motion detection to draw the motion detection area and adjust the motion detection sensitivity (This function only apply to some models).

##### Sound alarm

Select On indicates that the device has a microphone function. When the surrounding sound is greater than the intensity of the device check sound, an alarm is triggered. Click adjust the sound alarm can adjust the sound alarm sensitivity.

##### Human shape alarm (some devices supported)

Select On indicates that the camera will turn on the human shape recognition function and turn on frame the human shape. When there is a humanoid object on the camera

7

screen, a framed object will appear. When the alarm trigger selects separate alarm, it means that both motion detection and human shape recognition triggered separately can causes camera alarm. Selecting linkage trigger means that the camera will alarm when the two triggered at the same time.

#### Alarm time setting

Can set alarm all day or select specific alarm time period "Alarm linkage".

#### Alarm snap shot to SD Card

Select On to save the alarm snapshot pictures to SD card.

#### Alarm recording to SD card

Select On to save the alarm recording file to the SD card.

#### When the alarm is triggered, the device emits a siren

Select On to indicate that the camera will occur alarm sound when alarming, Siren type, duration optional.

#### Email alarm linkage

Select On indicates that the device will send captured pictures to the mailbox when the alarm is triggered, click Configure Email to set the email information.

Sender mailbox take QQ mailbox as an example:

Smtp server: smtp.qq.com

Port: 465

Secure connection: SSL

User name: QQ number of the sender mailbox

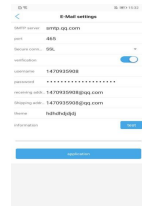
Password: Authorization code of QQ sender mailbox

Recipient's address: the mailbox to receive the alarm pictures

Sending address: sender's email address, here take QQ mailbox as an example, you need to fill in the QQ email address (the same as the user name)

Subject and content can be filled in casually

After filling in, click the Apply button, then click the Test button to check if you can send the alarm email



【Whether to enable recording】Select On, the device will save the recording to the SD card.

【Recording file time】Can adjust the length of each video file manually.

【Recording time period】

Simple setting: Select the simple setting, the default recording period is all day from Monday to Sunday

Advanced setting: Select advanced setting, you can customize the time period of each recording manually.

Enter the advanced settings interface, click the quick edit button, select the time period to be recorded, you can self-define the recording time period, after editing, click the finish button to save the settings.

### 7.4.2 SD card setting

Can view the total and free space of the SD card of the device; can format the SD card.

## 7.5 System settings

### 7.5.1 Device time setting

【Synchronize phone time to device】Sync device time to phone time.

【Set device time zone】Can set the device time zone. After the time zone is set successfully, the device will restart automatically.

### 7.5.2 Initial setting

【Restart the camera】The camera will restart after clicking.

【Reset】The camera will restore factory settings after clicking.

### 7.5.3 Device information

【Can obtain camera device information】Including device name, device type, network type, number of user connections, software version, IP address, subnet mask, gateway, DNS, etc.

【Check for updates】After clicking, the camera will check the firmware version automatically. If there is a new version, it will prompt to update, click to upgrade online.(This function is only applicable to some models)

## 7.6 Battery camera settings

### 7.6.1 Low power consumption setting and record

【Power working mode】Low power consumption and continuous working optional.

【Bit rate setting】Can set SD card recording stream.

【Whether to enable recording】After switching to the continuous working mode, can set to open or close the recording.

### 7.6.2 Alarm management and notification

【Alarm push】After Alarm push ON, the phone can receive alarm notifications.

【PIR alarm】Alarm can be detected after PIR alarm ON, PIR sensitivity can be set.

【Alarm linkage】Can set alarm to save video to SD card or FTP, 10 seconds and 30 seconds can be set.

## 7.7 Sharing device

Click the share button in the upper right corner of the camera settings interface, can share the QR code generated by the current camera information to other users



## 8. Videos/pictures search and view

### 8.1 Local video playback and download

Find the camera you want to view on the camera list interface, click the icon , select the video page, and the video files will be displayed. You can sort the video files according to the size and duration of the video files. Click the button to save the video file to the mobile phone album. Click the edit button to delete the selected video file.

### 8.2 View local snapshots

Click the picture page in the local file interface, the local snapped pictures will be displayed, the pictures are sorted according to the snapshot time, click the preview thumbnail to view the pictures, and click the button to delete or save the pictures to the album.



### 8.3 Remote video playback and download

【Remote video playback】Click the camera list interface button to enter the remote recording list interface, the APP will search the latest 6 hours of recording files by default. You can self-define the sequence according to the recording time. Click the

#### FTP Alarm Linkage

【Alarm recording saved to FTP】

Select On to save the alarm recording file to FTP

【Alarm snapshot saved to FTP】

Select On to save the alarm snapshot picture to FTP

Click Configure FTP to set FTP information

Server address: fill in the set FTP address

Port: Enter the port of FTP

Username and password: Fill in the username and password set in FTP

After filling in, click the Apply button, and then click the Test button to check if you can send the alarm picture to FTP.

#### Picture snapshot number setting

Can set the number of alarm snapshot pictures, 1-3 are optional.

This function is applicable to some models.

## 7.3 Video/Audio management

### 7.3.1 Video settings

【Bit rate】Can self-define the bit rate of the first code stream and the second code stream of the device.

【Frame rate】Can self-define the frame rate of the first code stream and second code stream of the device.

【Code level】1-6 can be set, the smaller the value, the better the image level, and the larger the code stream.

【Video system】50Hz and 60Hz optional.

### 7.3.2 Audio settings

【Input volume】Adjust input volume of the device.

【Output volume】Adjust output volume of the device.

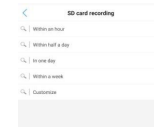
## 7.4 SD card recording and capacity

### 7.4.1 SD card plan record

recording file and then click Play to playback the recording file in the SD card of the device; click time playback to playback the video file through the timeline.

【Remote video download】Click the video file on the video list interface, and then click Download, the video file will be downloaded automatically. The downloaded video file will be saved in the local video interface. After the video download is complete, you can click Continue to download, continue to download other video files, or click to view, it will jump to the local recording interface automatically.

【Remote video search】Click the button in the video list interface, search options will appear, you can select the search range of the video according to your needs.



## 9. Other functions

### 9.1 Camera list display mode

Click the camera list interface icon , you can choose to view the camera list in large or small image mode

### 9.2 Sidebar settings

Click the camera list interface button , or slide right on the camera list interface to enter the APP sidebar, the APP name is displayed on the sidebar and the APP version is displayed below.

【Local files】Click the local file to enter the local file interface, this interface displays all the local videos and pictures saved by added camera on this phone. Click the file to playback the video file or view the local picture; click the edit button to delete the file.

【More】Click More button to check whether the APP has obtained the notification permission of the mobile phone. If it displays Not enabled, the APP cannot send the alarm push message. Clicking Not enabled will jump to the setting interface to enable the notification permission.