

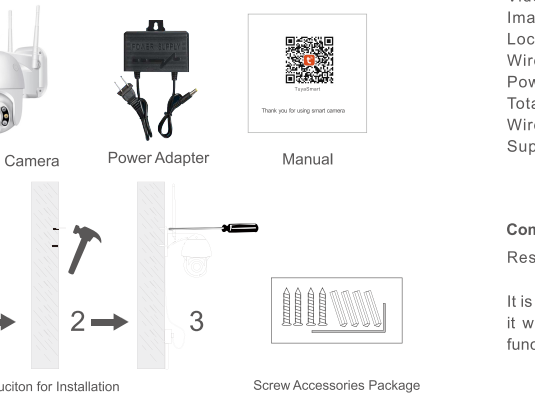


TuyaSmart

Thank you for using smart camera

1. Product Introduction

Packing list: Smart Camera × 1, Manual × 1, USB Power Cord × 1, Power Adapter × 1, Screw Accessories Package × 4



01

Basic Parameters

Product Name: Smart Camera
Pixel: 1.0Mp/2.0MP
Video Compression: H.264 High Profile
Image Enhancement: Digital Wide Dynamic 3D Noise Reduction
Local Storage: MicroTF card
Wireless Encryption: WEP/WPA/WPA2 Encryption

Power Input: 5V 1A(Min)
Total Power Consumption: 5W (Max)
Wireless Standard: 2.4G 802.11 b/g/n
Support Platform: Android/iOS

Component Description:

Reset Button: Long press "reset" hole 5sec, reset success.

It is recommended to insert 8-64GB high-speed Micro TF card, otherwise it will not be able to store, view historical video and support Important functions such as firmware upgrading.

02

2. Install APP

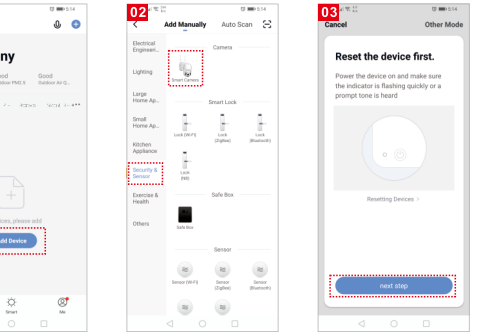
Download APP: scan the QR code below to download and install.
Register and login: open the "TuyaSmart" APP to register and login according to the prompts.



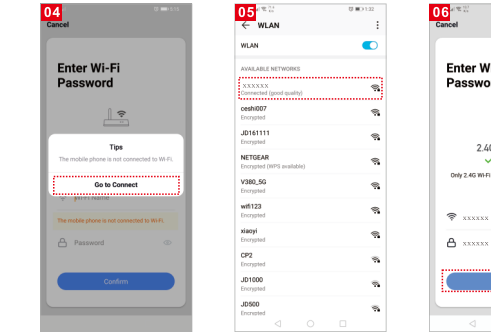
03

3.1、Add The Device-Scan QR code mode

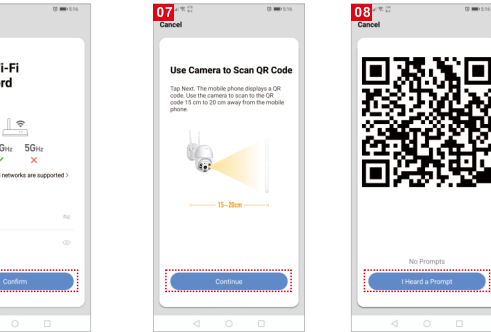
- Make sure Wi-Fi is available and connected to the Internet.
- Connect the camera to the power, then system startup completed.
- Open "TuyaSmart" APP, press the '+' in the upper right corner of the main screen (Figure 01); choose "Security & Sensor", click "Smart Camera" (Figure 02) to add camera; and then click "Next step" (Figure 03);



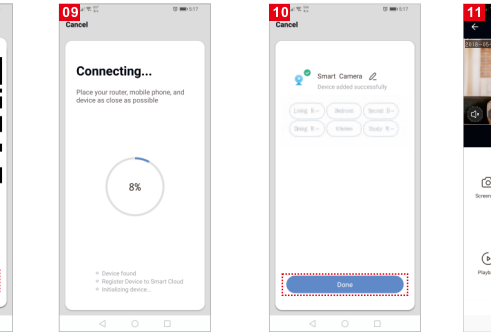
04



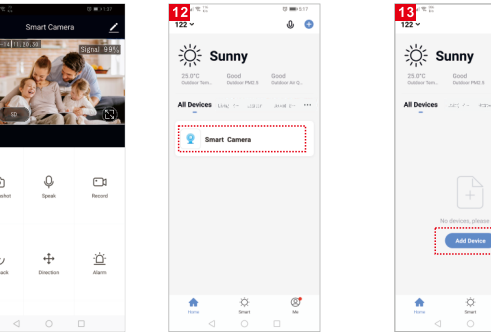
05



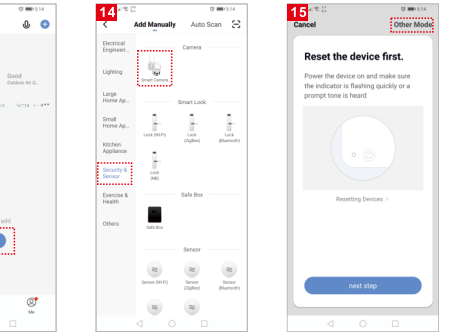
06



07



08



09

10

11

12

13

14

15

16

17

18

19

20

21

22

23

24

25

26

27

28

29

30

31

32

33

34

35

36

37

38

39

40

41

42

43

44

45

46

47

48

49

50

51

52

53

54

55

56

57

58

59

60

61

62

63

64

65

66

67

68

69

70

71

72

73

74

75

76

77

78

79

80

81

82

83

84

85

86

87

88

89

90

91

92

93

94

95

96

97

98

99

100

101

102

103

104

105

106

107

108

109

